

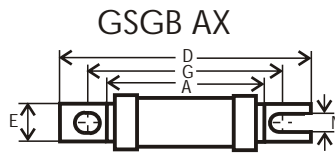
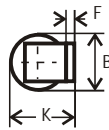
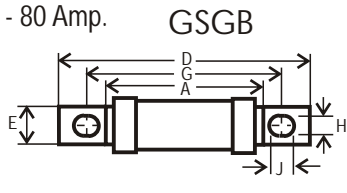


**ELETROFUSI**

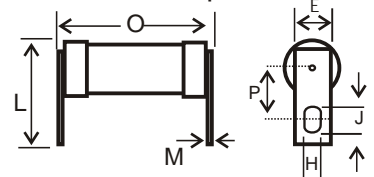
**SPECIAL FUSE LINKS**

# GSGB H.R.C. fuse links 660 Volts r.m.s.

Reference 1  
GSGB 16 - 80 Amp.

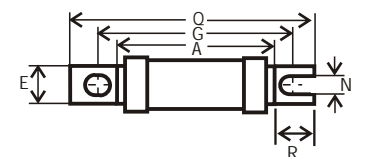


GSGB CR  
até 40 Amp

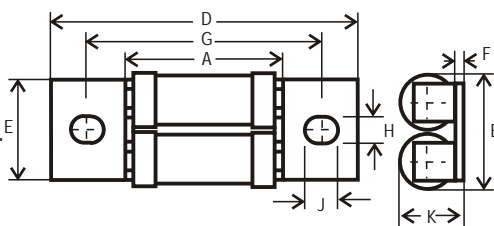


A	B	D	E	F	G	H	J	K	L	M	N	O	P	Q	R
50,0	17,3	79,5	12,7	2,4	61,8	6,25	7,9	18,2	33,0	1,0	4,8	48	15,6	76,5	12

GSGB AL

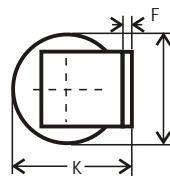
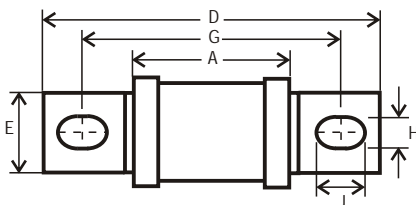


Reference 2  
GSGB 90 - 160 Amp.



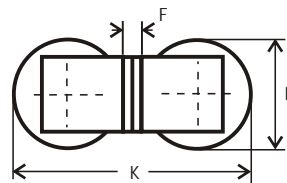
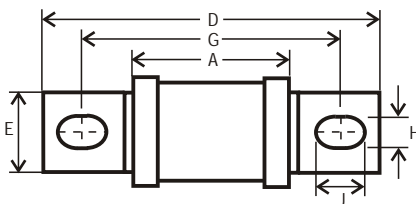
A	B	D	E	F	G	H	J	K
48,0	35,7	95,0	31,8	1,6	72,0	8,3	13,4	19,0

Reference 3  
GSGB 170 - 300 Amp.



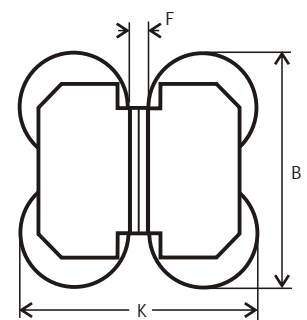
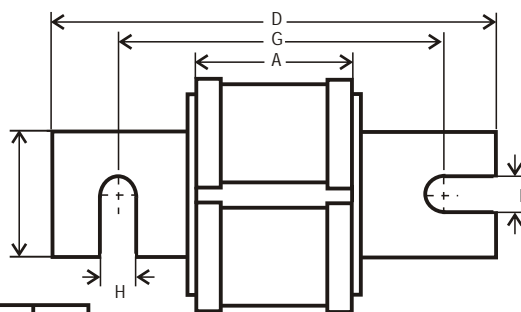
A	B	D	E	F	G	H	J	K
55,0	34,6	107,0	25,4	3,2	81,7	10,3	15,5	38,8

Reference 4  
GSGB 310 - 500 Amp.



A	B	D	E	F	G	H	J	K
55,0	34,6	107,0	25,4	6,4	81,7	10,3	15,5	77,6

Reference 5  
GSGB 510 - 900 Amp.



A	B	D	E	F	G	H	K
57,2	73,8	143,0	39,7	9,6	110	11,5	80,8

REV1.1 MAR 06  
REV1.2 MAY10